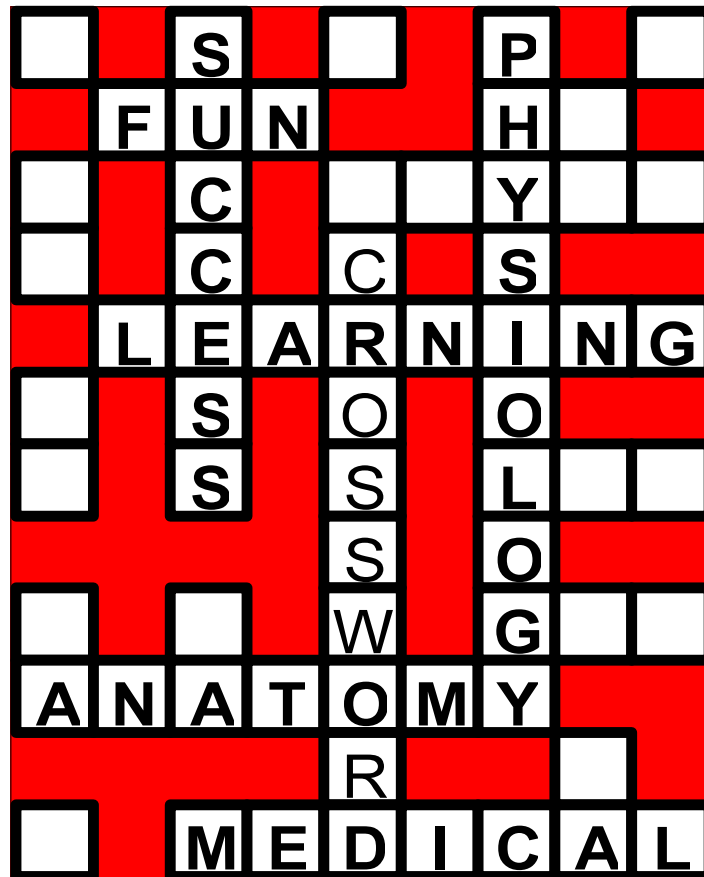


AnatomyWise®



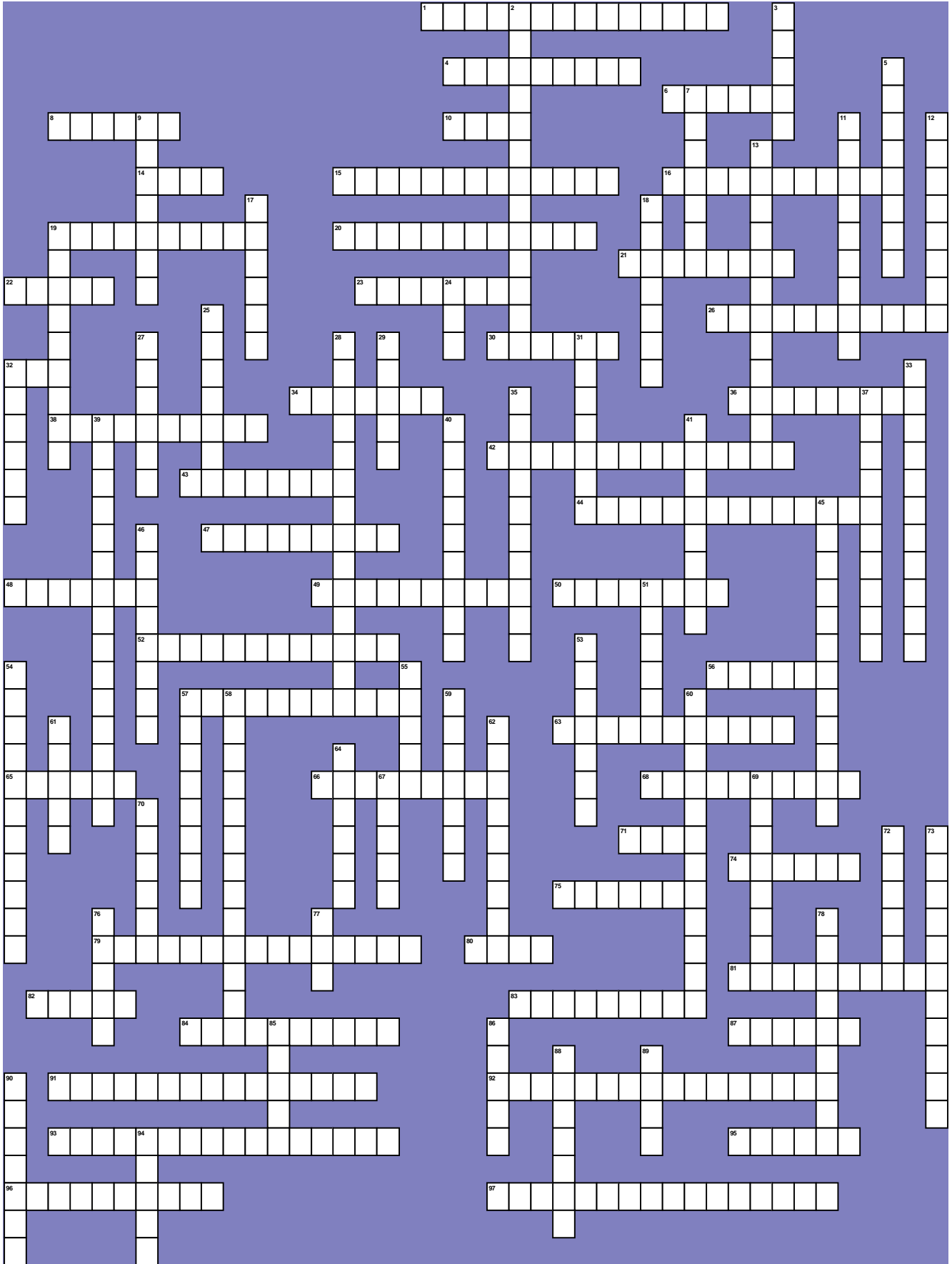
By Dr. Lucas D. Shallua

Level Two

Moderate

Human Anatomy

Puzzle Number D100



Human Anatomy

Puzzle Number D100

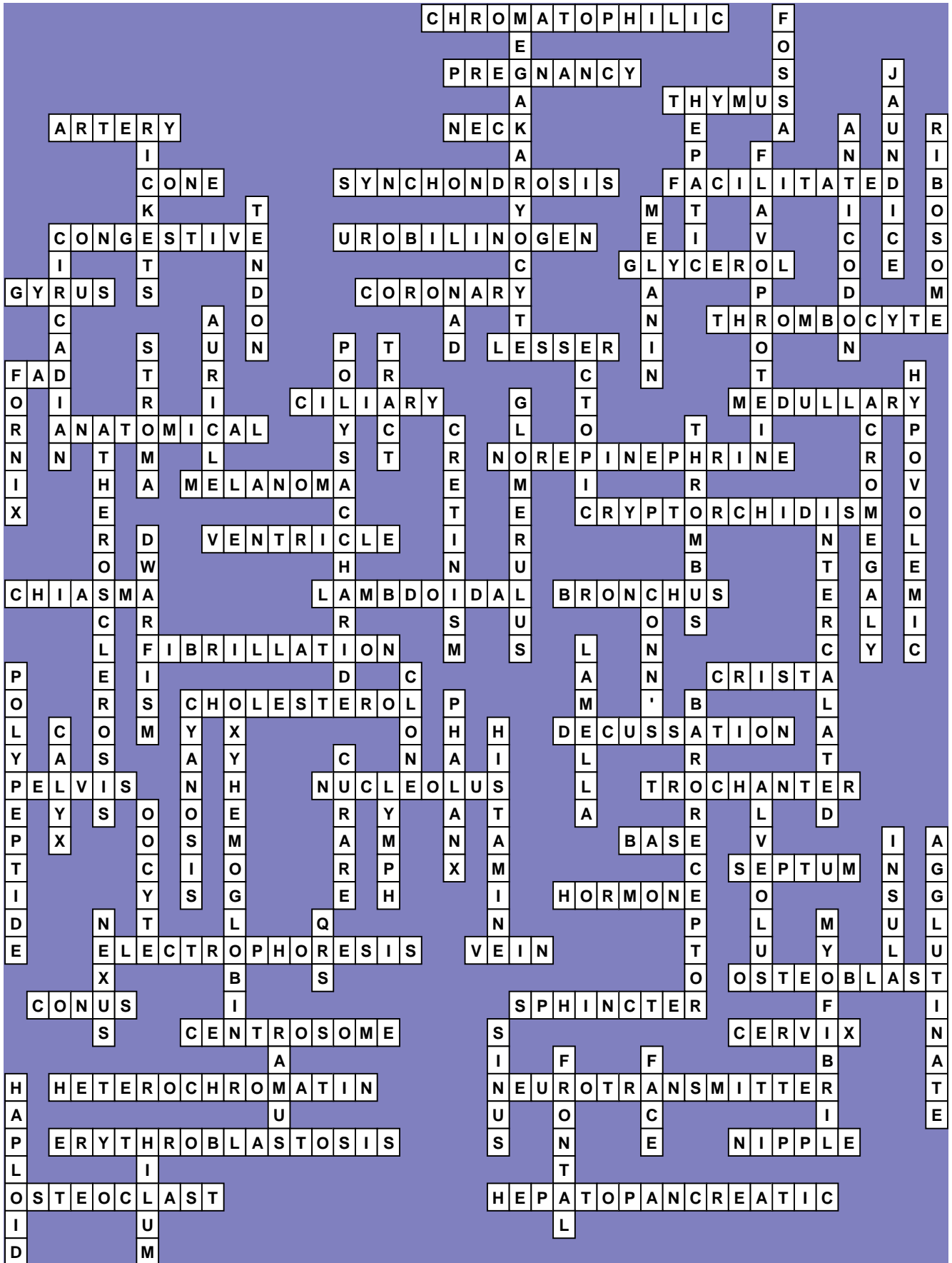
ACROSS

- 1 _____ substances. Clumps of rough endoplasmic reticulum in the cell bodies of neurons; also called Nissl bodies.
- 4 A condition in which a female is carrying a developing offspring within the body.
- 6 A bilobed lymphoid organ positioned in the upper mediastinum, posterior to the sternum and between the lungs.
- 8 A blood vessel that carries blood away from the heart.
- 10 1. Any constricted portion, such as the neck of an organ. 2. The cervical region of the body between the head and thorax.
- 14 A color receptor cell in the retina of the eye.
- 15 A cartilaginous joint in which the articulating bones are separated by hyaline cartilage.
- 16 _____ diffusion is the carrier-mediated transport of molecules through the cell membrane along the direction of their concentration gradients. It does not require the expenditure of metabolic energy.
- 19 _____ heart failure the inability of the heart to deliver an adequate blood flow as a result of heart disease or hypertension. This condition is associated with breathlessness, salt and water retention, and edema.
- 20 A compound formed from bilirubin in the small intestine; some is excreted in the feces, and some is absorbed and enters the enterohepatic circulation, where it may be excreted either in the bile or in the urine
- 21 A 3-carbon alcohol that serves as a building block of fats.
- 22 A convoluted elevation or ridge.
- 23 _____ circulation is the arterial and venous blood circulation to the wall of the heart.
- 26 A blood platelet formed from a fragmented megakaryocyte.
- 30 _____ omentum. A peritoneal fold of tissue extending from the lesser curvature of the stomach to the liver.
- 32 a coenzyme derived from riboflavin that participates in electron transport within the mitochondria.
- 34 _____ body is a portion of the choroid layer of the eye that secretes aqueous humor. It contains the ciliary muscle.
- 36 _____ cavity. The hollow core of the diaphysis of a long bone in which marrow is found.
- 38 _____ position. An erect body stance with the eyes directed anterior, the arms at the sides, the palms of the hands facing anterior, and the fingers pointing straight down.
- 42 A catecholamine released as a neurotransmitter from postganglionic sympathetic nerve endings and as a hormone (together with epinephrine) from the adrenal medulla.
- 43 A dark, malignant tumor of the skin that frequently forms in moles.
- 44 A developmental defect in which one or both testes fail to descend into the scrotum and, instead, remain in the body cavity.
- 47 A cavity within an organ; especially those cavities in the brain that contain cerebrospinal fluid and those in the heart that contain blood to be pumped from the heart
- 48 A crossing of nerve tracts from one side of the CNS to the other; also called a chiasm
- 49 _____ suture is the immovable joint in the skull between the parietal bones and the occipital bone.
- 50 A branch of the trachea that leads to a lung.
- 52 A condition of cardiac muscle characterized electrically by random and continuously changing patterns of electrical activity and resulting in the inability of the myocardium to contract as a unit and pump blood. It can be fatal if it occurs in the ventricles
- 56 A crest, such as the _____ galli that extends superiorly from the cribriform plate of the ethmoid bone.
- 57 A 27-carbon steroid that serves as the precursor of steroid hormones.
- 63 A crossing of nerve fibers from one side of the CNS to the other
- 65 A basin-like bony structure formed by the sacrum and ossa coxae.
- 66 A dark-staining area within a cell nucleus; the site where ribosomal RNA is produced.
- 68 A broad, prominent process on the proximalateral portion of the femur.
- 71 A chemical substance that ionizes in water to release hydroxyl ions(OH-) or other ions that combine with hydrogen ions.
- 74 A bony and cartilaginous partition that separates the nasal cavity into two portions.
- 75 A chemical substance produced in an endocrine gland and secreted into the bloodstream to cause an effect in a specific target organ
- 79 A biochemical technique in which different molecules can be separated and identified by their rate of movement in an electric field.
- 80 A blood vessel that conveys blood toward the heart.
- 81 A bone-forming cell.
- 82 _____ medullaris is the inferior, tapering portion of the spinal cord.
- 83 A circular muscle that functions to constrict a body opening or the lumen of a tubular structure.
- 84 A dense body near the nucleus of a cell that contains a pair of centrioles.
- 87 1. The narrow necklike portion of an organ. 2. The inferior end of the uterus that adjoins the vagina
- 91 A condensed, inactive form of chromatin
- 92 A chemical contained in synaptic vesicles in nerve endings that is released into the synaptic cleft, where it stimulates the production of either excitatory or inhibitory postsynaptic potentials.
- 93 _____ fetalis is a Hemolytic anemia in an Rh positive newborn caused by maternal antibodies against the Rh factor that have crossed the placenta.
- 95 A dark pigmented, rounded projection at the tip of the breast.
- 96 A cell that causes erosion and resorption of bone tissue.
- 97 _____ ampulla is a small, elevated area within the duodenum where the combined pancreatic and common bile duct empties; also called the ampulla of Vater.
- 7 _____ duct formed from the fusion of several bile ducts that drain bile from the liver. It merges with the cystic duct from the gallbladder to form the common bile duct.
- 9 A condition caused by a deficiency of vitamin D and associated with an interference of the normal ossification of bone.
- 11 A base triplet provided by three nucleotides within a loop of transfer RNA that is complementary in its base-pairing properties to a triplet(the codon) in mRNA
- 12 A cytoplasmic organelle composed of protein and RNA in which protein synthesis occurs.
- 13 A conjugated protein containing a flavin pigment that is involved in electron transport within the mitochondria.
- 17 A band of dense regular connective tissue that attaches muscle to bone.
- 18 A dark pigment found within the epidermis or epidermal derivatives of the skin.
- 19 _____ rhythms are physiological changes that repeat at about 24-hour intervals. These are often synchronized with changes in the external environment, such as the day-night cycles.
- 24 a coenzyme derived from niacin that helps to transport electrons from the Krebs cycle to the electron-transport chain within mitochondria.
- 25 1. The fleshy pinna of the ear. 2. An ear-shaped appendage of each atrium of the heart.
- 27 A connective tissue framework in an organ, gland, or other tissue.
- 28 A carbohydrate formed by covalent bonding of numerous monosaccharides. Examples include glycogen and starch.
- 29 A bundle of nerve fibers within the central nervous system.
- 31 _____ pregnancy is an embryonic development that occurs anywhere other than in the uterus (as in the uterine tubes or body cavity).
- 32 1. A recess around the cervix of the uterus where it protrudes into the vagina. 2. A tract within the brain connecting the hippocampus with the mammillary bodies.
- 33 _____ shock is a rapid fall in blood pressure as a result of diminished blood volume.
- 35 A coiled tuft of capillaries surrounded by the glomerular capsule that filtrates urine from the blood.
- 37 A condition caused by the hypersecretion of growth hormone from the pituitary gland after maturity and characterized by enlargement of the extremities, such as the nose, jaws, fingers, and toes.
- 39 A common type of this is found in medium and larger arteries in which raised areas within the tunica intima are formed from smooth muscle cells, cholesterol, and other lipids. These plaques occlude arteries and serve as sites for the formation of thrombi.
- 40 A condition caused by insufficient thyroid secretion during prenatal development or the years of early childhood. It results in stunted growth and inadequate mental development.
- 41 A blood clot produced by the formation of fibrin threads around a platelet plug.
- 45 _____ disk is a thickened portion of the sarcolemma that extends across a cardiac muscle fiber, indicating the boundary between cardiac cells.
- 46 A condition in which a person is undersized due to inadequate secretion of growth hormone.
- 51 _____ syndrome; primary hyperaldosteronism; excessive secretion of aldosterone produces electrolyte imbalances.
- 53 A concentric ring of matrix surrounding the central canal in an osteon of mature bone tissue.
- 54 A chain of amino acids connected by covalent bonds called peptide bonds. A very large of this is also called a protein.
- 55 1. A group of cells derived from a single parent cell by mitotic cell division; since reproduction is asexual, the descendants of the parent cell are genetically identical. 2. A term used to refer to cells as separate individuals(as in white blood cells) rather than as part of a growing organ.
- 57 A bluish discoloration of the skin or mucous membranes due to excessive concentration of deoxyhemoglobin; indicates inadequate oxygen concentration in the blood
- 58 A compound formed by the bonding of molecular oxygen to hemoglobin.
- 59 A bone of a finger or toe.
- 60 A cluster of neuroreceptors stimulated by pressure changes. Baroreceptors monitor blood pressure.
- 61 A cup-shaped portion of the renal pelvis that encircles a renal papilla.
- 62 A compound secreted by tissue mast cells and other connective tissue cells that stimulates vasodilation and increases capillary permeability. It is responsible for many of the symptoms of inflammation and allergy.
- 64 A chemical derived from plant sources that causes flaccid paralysis by blocking ACh receptor proteins in muscle cell membranes
- 67 A clear, plasma-like fluid that flows through lymphatic vessels.
- 69 1. An individual air capsule within the lung. The alveoli are the basic functional units of respiration. 2. The socket that secures a tooth(tooth socket).
- 70 A developing egg cell.
- 72 A deep, paired cerebral lobe.
- 73 A clump of cells (usually erythrocytes) formed as a result of specific chemical interaction between surface antigens and antibodies.
- 76 A bond between members of a group; the type of bonds present in single-unit smooth muscles.
- 77 _____ complex. The principal deflection of an electrocardiogram that is produced by depolarization of the ventricles.
- 78 A bundle of contractile fibers within muscle cells.
- 85 A branch of a bone, artery, or nerve.
- 86 A cavity or hollow space within a body organ, such as a bone.
- 88 1. Pertaining to the region of the forehead. 2. A plane through the body, dividing the body into anterior and posterior portions; also called the coronal plane.
- 89 1. The anterior aspect of the head not supporting or covering the brain. 2. The exposed surface of a structure.
- 90 A cell that has one of each chromosome type and therefore half the number of chromosomes present in most other body cells; only the gametes (sperm and ova) are haploid.
- 94 A concave or depressed area where vessels or nerves enter or exit an organ; also called hilus.

Human Anatomy

Puzzle Number D100

Solution:

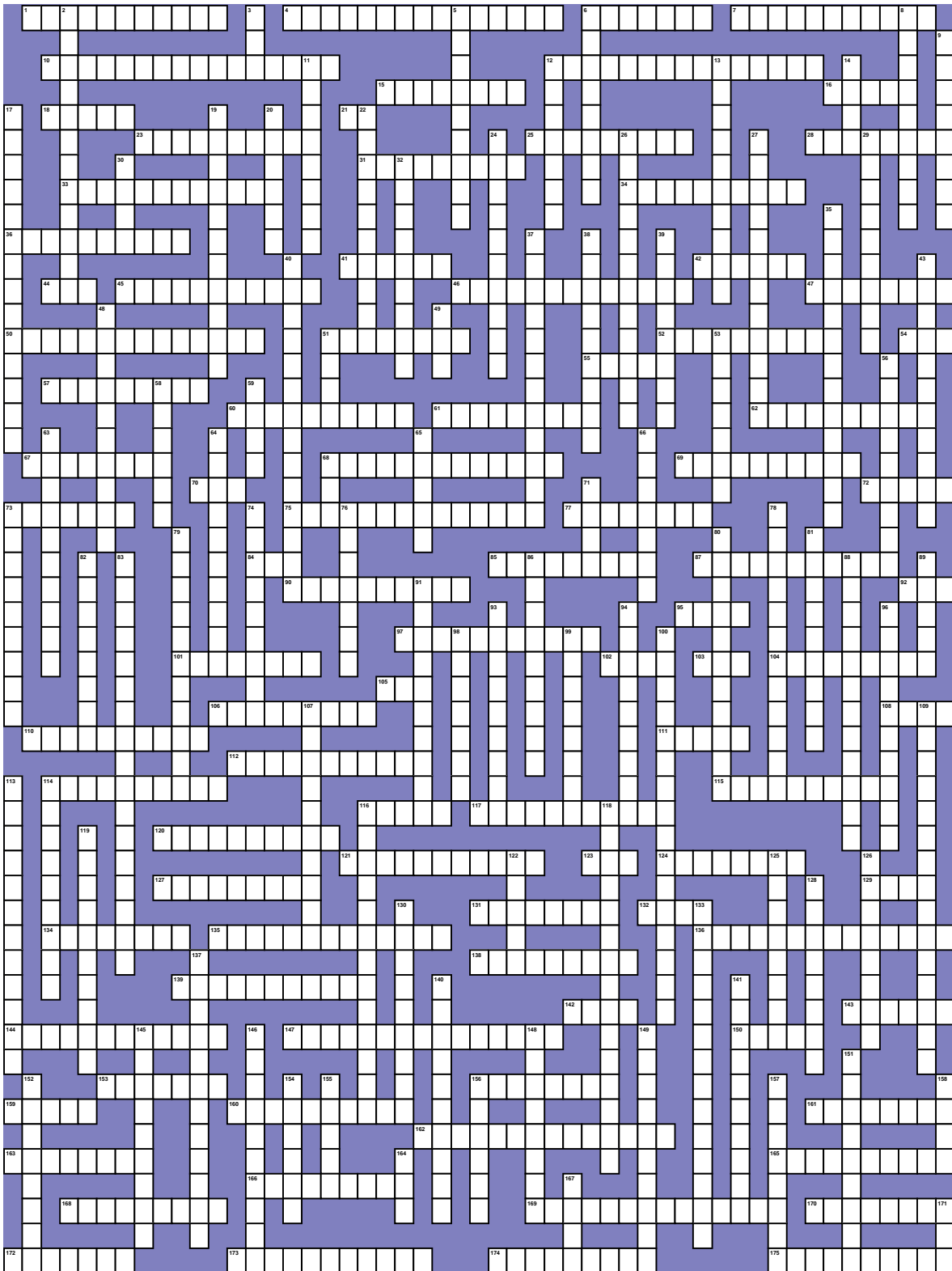


Level Three

Advanced

Human Anatomy

Puzzle Number T100



Human Anatomy

Puzzle Number T100

ACROSS

- The inner lining of the uterus.
- The anterior, glandular lobe of the pituitary gland that secretes FSH (follicle-stimulating hormone), LH (luteinizing hormone), ACTH (adrenocorticotropic hormone), TSH (thyroid-stimulating hormone), GH (growth hormone), and prolactin. Secretions of the adenohypophysis are controlled by hormones produced by the hypothalamus.
- An opening into a body cavity or tube.
- The thin membrane covering the anterior surface of the eyeball and lining the eyelids.
- _____fetalis is a Hemolytic anemia in an Rh positive newborn caused by maternal antibodies against the Rh factor that have crossed the placenta.
- A sensory receptor that responds to a mechanical stimulus.
- A walnut-shaped gland surrounding the male urethra just below the urinary bladder that secretes an additive to seminal fluid during ejaculation.
- A bundle of nerve fibers within the central nervous system.
- A cavity or hollow space within a body organ, such as a bone.
- A measure of the relative acidity or alkalinity of a solution, numerically equal to 7 for neutral solutions.
- A dense body near the nucleus of a cell that contains a pair of centrioles.
- A flexible rod of tissue that extends the length of the back of an embryo.
- An eyelid.
- A small, pea-shaped endocrine gland situated on the inferior surface of the diencephalic region of the brain, consisting of anterior and posterior lobes; also called the hypophysis.
- Denoting bones that develop as hyaline cartilage models first and that are then ossified.
- Footlike extensions of the cytoplasm that enable some cells (with amoeboid motion) to move across a substrate. They are also used to surround food particles in the process of phagocytosis.
- The dissociation of a solute to form ions.
- The region of the foot containing the seven tarsal bones.
- Cyclic changes in the structure and function of the ovaries and female reproductive tract of mammals other than humans, accompanied by periods of "heat" or sexual receptivity. It is the equivalent of the human menstrual cycle but differs from the human menstrual cycle in that the endometrium is not shed with accompanying bleeding.
- A nucleic acid consisting of the nitrogenous bases adenine, guanine, cytosine, and uracil; the sugar ribose; and phosphate groups.
- The process of voiding urine; also called urination.
- The anterior portion of the forebrain, constituting the cerebral hemispheres and related parts.
- A type of neurotransmitter in the central nervous system; also is the precursor of norepinephrine, another neurotransmitter molecule.
- Extension beyond the normal anatomical position or 180°.
- Colloidal particles formed by the aggregation of many molecules.
- The connective tissue sheath that surrounds each skeletal muscle fiber, separating the muscle cells from one another.
- An atom or group of atoms that has either lost or gained electrons and thus has a net positive or a net negative charge.
- The space within a tubular structure through which a substance passes.
- Denoting muscles that have a fiber architecture crossing obliquely on both sides of a tendon.
- A polypeptide hormone produced by the parafollicular cells of the thyroid and secreted in response to hypercalcemia. It acts to lower blood calcium and phosphate concentrations and may serve as an antagonist of parathyroid hormones.
- A group of cells that has the fastest spontaneous rate of depolarization and contraction in a mass of electrically coupled cells; in the heart, this is the sinoatrial, or SA, node.
- A mixture of lipoproteins (containing phospholipids) secreted by type II alveolar cells into the alveoli of the lungs. It lowers surface tension and prevents collapse of the lungs as occurs in hyaline membrane disease, in which surfactant is absent.
- A new, abnormal growth of tissue, as in a tumor.
- A procedure in which a sample of amniotic fluid is aspirated to examine suspended cells for various genetic diseases.
- A highly coiled tube located along the posterior border of the testis. It stores spermatozoa and transports them from the seminiferous tubules of the testis to the ductus deferens.
- the universal energy donor of the cell.
- The enlarged superior portion of the central nervous system located in the cranial cavity of the skull.
- A narrow neck or portion of tissue connecting two structures.
- The reestablishment of the resting membrane potential after depolarization has occurred.
- A sugarlike B-complex vitamin. Inositol triphosphate is believed to act as a second messenger in the action of some hormones.
- A coenzyme derived from riboflavin that participates in electron transport within the mitochondria.
- valve A modification of the mucosa at the junction of the small and large intestine that forms a one-way passage and prevents the backflow of food materials.
- A simple squamous epithelial tissue that lines body cavities and covers visceral organs; also called serosa.
- A type of white blood cell characterized by the

- presence of cytoplasmic granules that become stained by acidic eosin dye. Eosinophils normally constitute about 2% to 4% of the white blood cells.
- A photoreceptor in the retina of the eye that is specialized for colorless, dim-light vision.
 - A hardened, keratinized plate that develops from the epidermis and forms a protective covering on the surface of the distal phalanges of fingers and toes.
 - A fibrous or membranous sheathlike tendon.
 - Arterial blood pressure during the ventricular systolic phase of the cardiac cycle.
 - A color receptor cell in the retina of the eye.
 - A coenzyme derived from niacin that helps to transport electrons from the Krebs cycle to the electron-transport chain within mitochondria.
 - An extraembryonic membranous sac involved in the formation of blood cells. It gives rise to the fetal umbilical arteries and vein and also contributes to the formation of the urinary bladder.
 - The rate of metabolism (expressed as oxygen consumption or heat production) under resting or basal conditions (14 to 18 hours after eating)
 - A pair of small cartilages located on the superior aspect of the larynx.
 - 1.Any constricted portion, such as the neck of an organ.
2.The cervical region of the body between the head and thorax.
 - A muscular layer or tunic of an organ, composed of smooth muscle tissue.
 - A poison.
 - The discharge of semen from the male urethra that accompanies orgasm.
 - Denoting a chemical reaction that requires the input of energy from an external source in order to proceed.
 - The sum total of the chemical changes that occur within a cell.
 - As it relates to the cardiovascular system, this term refers to a rapid, uncontrolled fall in blood pressure, which in some cases becomes irreversible and leads to death.
 - Excessive concentration of carbon dioxide in the blood.
 - The transport of molecules across epithelial membranes into the body fluids.
 - An unusually severe allergic reaction that can result in cardiovascular shock and death.
 - _____complex. The principal deflection of an electrocardiogram that is produced by depolarization of the ventricles.
 - Pertaining to the neck or a necklike portion of an organ.
 - A fluid of the inner ear that provides a liquid-conducting medium for the vibrations involved in hearing and the maintenance of equilibrium.
 - The portion of the brain stem just above the medulla oblongata and anterior to the cerebellum.
 - Cellular death or tissue death due to disease or trauma.
 - The iron-containing red pigment that, together with the protein globin, forms hemoglobin.
 - Muscle contraction in which the muscle shortens in length and maintains approximately the same amount of tension throughout the shortening process.
 - An acetic acid ester of choline—a substance that functions as a neurotransmitter in somatic motor nerve and parasympathetic nerve fibers.
 - Large molecules; a term that usually refers to protein, RNA, and DNA.
 - Surgical removal of portions of the ductus deferentia to induce infertility.
 - _____diffusion is the carrier-mediated transport of molecules through the cell membrane along the direction of their concentration gradients. It does not require the expenditure of metabolic energy.
 - The uppermost portion of a human that contains the brain and major sense organs.
 - A polysaccharide of fructose, produced by certain plants, that is filtered by the human kidneys but neither reabsorbed nor secreted. The clearance rate of injected insulin is thus used to measure the glomerular filtration rate.
 - The process by which a blastocyst attaches itself to and penetrates into the endometrium of the uterus.
 - Steroid hormones secreted by the adrenal cortex (corticosteroids). They affect the metabolism of glucose, protein, and fat and also have anti-inflammatory and immunosuppressive effects. The major glucocorticoid in humans is hydrocortisone (cortisol).
 - Excessively fat.
 - The airway leading from the larynx to the bronchi, composed of cartilaginous rings and a ciliated mucosal lining of the lumen; commonly called the windpipe.
 - Pertaining to the palate.
 - A depressed area, usually on a bone.
 - An artificial device to replace a diseased or worn body part.
 - Abnormal frequency of defecation accompanied by abnormal liquidity of the feces.
 - _____substances. Clumps of rough endoplasmic reticulum in the cell bodies of neurons; also called Nissl bodies.
 - A membranous-covered region on the skull of a fetus or baby where ossification has not yet occurred; commonly called a soft spot.
 - A supporting framework of fibers crossing the substance of a structure, as in the lamellae of spongy bone.
 - A tubular portion of the GI tract that leads from the pharynx to the stomach as it passes through the thoracic cavity.
 - The process by which larger molecules of food substance are broken down mechanically and chemically into smaller molecules that can be absorbed.
 - A recording of the electrical impulses or activity of skeletal muscles using surface electrodes.
 - A dark, malignant tumor of the skin that frequently forms in moles.

- A fever-producing substance.
- The process of giving birth; childbirth.
- A fold of peritoneal membrane that attaches an abdominal organ to the abdominal wall.
- Duplicated chromosomes, joined together at the centromere, that separate during cell division.

DOWN

- Movement at the ankle as the dorsum of the foot is elevated.
- The GI tract or a portion thereof; generally used in reference to the embryonic digestive tube, consisting of the foregut, midgut, and hindgut.
- After birth.
- The study of tumors.
- A space or cavity at the entrance to a canal, especially that of the nose, inner ear, or vagina.
- Pertaining to the chest region.
- Toward the center, away from the surface of the body.
- A single molecular unit of a longer, more complex molecule. Monomers are joined together to form dimers, trimers, and polymers; the hydrolysis of polymers eventually yields separate monomers.
- The metabolic breakdown of complex molecules into simpler ones, often resulting in a release of energy.
- Pertaining to the mouth.
- A catecholamine released as a neurotransmitter from postganglionic sympathetic nerve endings and as a hormone (together with epinephrine) from the adrenal medulla.
- A slow cardiac rate; fewer than 60 beats per minute.
- cell A unicellular mucus-secreting gland that is associated with columnar epithelia; also called a mucous cell
- present at greater than atmospheric pressure.
- A general term for the colloidal complex of protein that constitutes the living material of a cell. It includes cytoplasm and nucleoplasm.
- An abnormally high concentration of potassium in the blood.
- Cartilage-forming cells.
- Pertaining to the lungs.
- The terminal portion of the lower extremity, consisting of the tarsal bones, metatarsal bones, and phalanges.
- The weakest stimulus capable of producing an action potential in an excitable cell.
- A process whereby the focal length of the eye is changed by automatic adjustment of the curvature of the lens to bring images of objects from various distances into focus on the retina.
- The discharge of blood and tissue from the uterus at the end of the menstrual cycle.
- A microscopic blood vessel that connects an arteriole and a venule; the functional unit of the circulatory system.
- Originating within muscle cells; used to describe self-excitation by cardiac and smooth muscle cells.
- The monomer of the more complex carbohydrates, examples of which include glucose, fructose, and galactose; also called a simple sugar.
- A general term for the cellular uptake of particles that are too large to cross the cell membrane also related to phagocytosis and pinocytosis.
- The portion of the brain concerned with the coordination of skeletal muscle contraction. Part of the metencephalon, it consists of two hemispheres and a central vermis.
- The portion of the lower extremity between the knee and ankle.
- A type of connective tissue cell that produces and secretes histamine and heparin and promotes local inflammation.
- The passage of solvent (water) from a more dilute to a more concentrated solution through a membrane that is more permeable to water than to the solute.
- A sheathlike dome of muscle and connective tissue that separates the thoracic and abdominal cavities.
- An abnormal reduction in the red blood cell count, hemoglobin concentration, or hematocrit, or any combination of these measurements. This condition is associated with a decreased ability of the blood to carry oxygen.
- A chemical substance that ionizes in water to release hydroxyl ions(OH-) or other ions that combine with hydrogen ions.
- The central region of a chromosome to which the chromosomal arms are attached.
- The region of the hand between the wrist and the phalanges, including the five metacarpal bones that support the palm of the hand.
- A protein in muscle fibers that together with myosin is responsible for contraction.
- 1.The fleshy pinna of the ear. 2.An ear-shaped appendage of each atrium of the heart.
- A molecule that together with inorganic phosphate is used to make ATP (adenosine triphosphate).
- A region in the lower extremity between the thigh and the leg that contains a synovial hinge joint.
- A movement of the foot in which the sole is turned inward.
- Pertaining to the sense of smell.
- One of the three bones of the middle ear; also called the auditory ossicle.
- Softening of bones due to a deficiency of vitamin D and calcium.
- A crossing of nerve fibers from one side of the CNS to the other.
- A protective serous membrane that surrounds the heart.
- _____cavity. The hollow core of the diaphysis of a long bone in which marrow is found.
- An agent that promotes the excretion of urine, thereby lowering blood volume and pressure.
- An increase in the negativity of the inside of a cell membrane with respect to the resting membrane potential.
- A toxin found within certain types of bacteria that is able to stimulate the release of endogenous pyrogen and produce a fever.
- The process of increasing one's resistance to pathogens. In active immunity a person is injected with antigens that stimulate the development of clones of specific B or T lymphocytes; in passive immunity a person is injected with antibodies produced by another organism.
- _____medullaris is the inferior, tapering portion of the spinal cord.
- Denoting a solution with a greater solute concentration and thus a greater osmotic pressure than plasma.
- Pertaining to the sense of taste.
- A rotational movement of the forearm in which the palm of the hand is turned posteriorly.
- Enzymes, usually produced by different organs, that catalyze the same reaction but that differ from each other in amino acid composition.
- A spheroidal body within a cell that contains the genetic factors of the cell.
- A solution having the same total solute concentration, osmolality, and osmotic pressure as the solution with which it is compared; a solution with the same solute concentration and osmotic pressure as plasma.
- _____ampulla is a small, elevated area within the duodenum where the combined pancreatic and common bile duct empties; also called the ampulla of Vater.
- A type of phagocytic white blood cell, normally constituting about 60% to 70% of the white blood cell count.
- Steroid hormones of the adrenal cortex, consisting of glucocorticoids(such as hydrocortisone) and mineralocorticoids(such as aldosterone).
- A conjugated protein containing a flavin pigment that is involved in electron transport within the mitochondria.
- A fibrous outer sheath of connective tissue surrounding a skeletal muscle.
- A cartilaginous joint in which the articulating bones are separated by hyaline cartilage.
- Pertaining to the division of the autonomic nervous system concerned with activities that, in general, inhibit or oppose the physiological effects of the sympathetic nervous system.
- _____position. An erect body stance with the eyes directed inferior, the arms at the sides, the palms of the hands facing inferior, and the fingers pointing straight down.
- The middle of three auditory ossicles within the middle-ear chamber; commonly called the anvil.
- An alkaloid drug obtained from a plant of the species *Belladonna* that acts as an anticholinergic agent. It is used medically to inhibit parasympathetic nerve effects, dilate the pupils of the eye, increase the heart rate, and inhibit intestinal movements.
- A type of sweat gland that functions in evaporative cooling. It may respond during periods of emotional stress.
- The region of the body where the humerus articulates with the scapula.
- Liver disease characterized by loss of normal microscopic structure, which is replaced by fibrosis and nodular regeneration.
- The process of producing an emulsion or fine suspension; in the small intestine, fat globules are emulsified by the detergent action of bile.
- A cluster of neuroreceptors stimulated by pressure changes. Baroreceptors monitor blood pressure.
- The interval between successive cell divisions, during which time the chromosomes are in an extended state and are active in directing RNA synthesis.
- A broad, prominent process on the proximalateral portion of the femur.
- A phase of metabolism involving chemical reactions within cells that result in the production of larger molecules from smaller ones; specifically, the synthesis of protein, glycogen, and fat.
- A thin, membranous covering surrounding the myelin sheath of a nerve fiber.
- The sequence of the cardiac cycle during which a heart chamber wall is relaxed.
- The science that deals with the study of body functions.
- A whiplike structure that provides motility for sperm.
- _____circulation is the arterial and venous blood circulation to the wall of the heart.
- A group of osteocytes and concentric lamellae surrounding a central canal, constituting the basic unit of structure in osseous tissue; also called a haversian system.
- The proximal portion of the lower extremity between the hip and the knee in which the femur is located.
- A unit of positive charge in the nucleus of atoms.
- Relating to the entire organism rather than to individual parts.
- 1.The anterior aspect of the head not supporting or covering the brain. 2 2.The exposed surface of a structure.
- one of the two gonadotropic hormones secreted from the anterior pituitary. In females, FSH stimulates the development of the ovarian follicles; in males, it stimulates the production of sperm in the seminiferous tubules.
- A blood vessel that conveys blood toward the heart.
- The sympathetic and parasympathetic portions of the nervous system that function to control the actions of the visceral organs and skin

Human Anatomy

Puzzle Number T100

Solution:

